

THIS INSTRUMENT PREPARED BY
DAVID P. LINDLEY
OF
CAULFIELD and WHEELER, INC.
SURVEYORS - ENGINEERS - PLANNERS
7900 GLADES ROAD, SUITE 100
BOCA RATON, FLORIDA 33434 - (561)392-1991
JUNE - 2013

VILLAGGIO ISLES PUD REPLAT

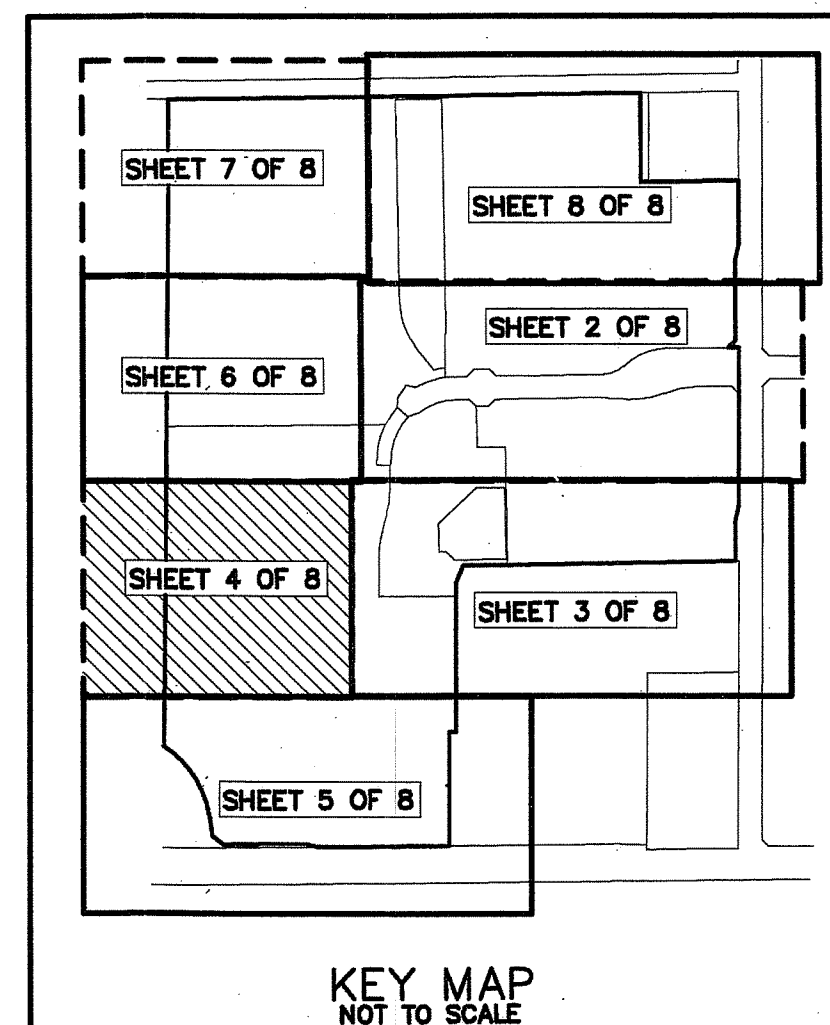
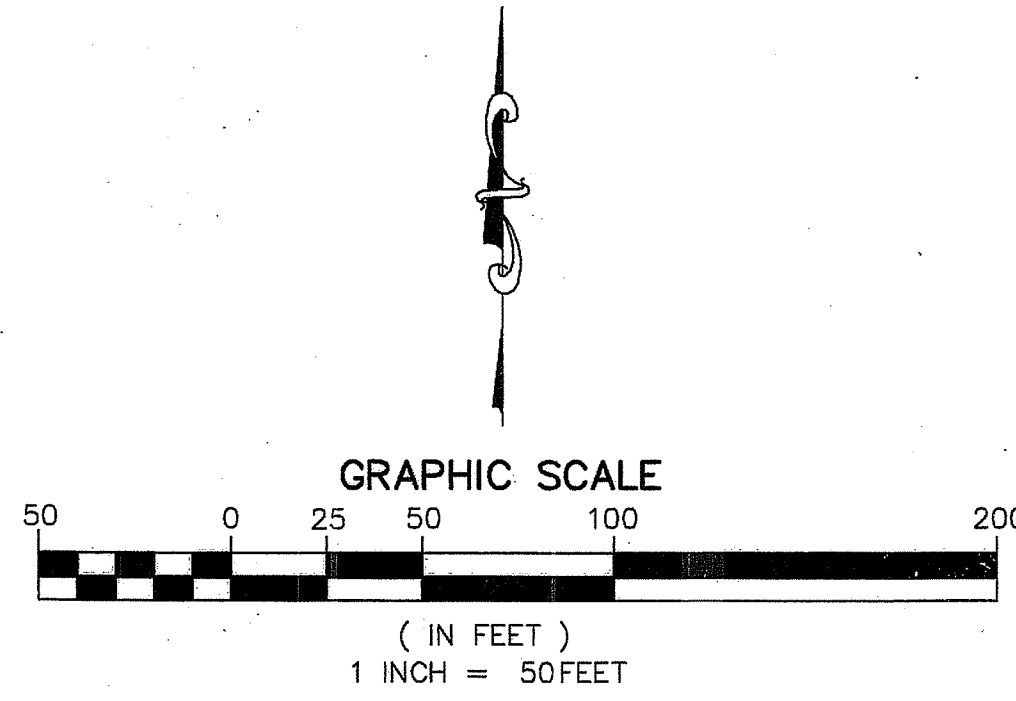
VILLAGGIO ISLES PUD, A PLANNED UNIT DEVELOPMENT
BEING A REPLAT OF PARCEL A, TRACT L, TRACT R AND TRACT W, VILLAGGIO ISLES-PHASE I
AS RECORDED PLAT BOOK 111, PAGES 123 THROUGH 131 OF THE PUBLIC RECORDS OF PALM BEACH COUNTY, FLORIDA
LYING IN SECTION 16 TOWNSHIP 46 SOUTH, RANGE 42 EAST, PALM BEACH COUNTY, FLORIDA

LEGEND/ABBREVIATIONS

- CL - CENTERLINE
- Δ - DELTA (CENTRAL ANGLE)
- AC - ACRES
- CB - CHORD BEARING
- CD - CHORD DISTANCE
- DE - DRAINAGE EASEMENT
- FPL - FLORIDA POWER & LIGHT CO.
- L - ARC LENGTH
- LAE - LIMITED ACCESS EASEMENT
- LB - LICENSED BUSINESS
- LMAE - LAKE MAINTENANCE ACCESS EASEMENT
- LME - LAKE MAINTENANCE EASEMENT
- LSE - LIFT STATION EASEMENT
- L.W.D. - LAKE WORTH DRAINAGE DISTRICT
- O.R.B. - OFFICIAL RECORD BOOK
- PBCUE - PALM BEACH COUNTY UTILITY EASEMENT
- R - RADIUS
- (R) - INDICATES RADIAL LINE
- SF - SQUARE FEET
- UE - UTILITY EASEMENT
- PRM - DENOTES PERMANENT REFERENCE MONUMENT
4" x 4" x 24" CONCRETE MONUMENT STAMPED LB3591
- PCP - DENOTES PERMANENT CONTROL POINT
NAIL AND METAL DISK STAMPED LB3591
- ▲ DENOTES PERMANENT REFERENCE MONUMENT SET NAIL AND DISC
STAMPED "PRM" LB 3591

NOTES COORDINATES, BEARINGS AND DISTANCES

COORDINATES SHOWN ARE GRID
DATUM = NAD 83 1990 ADJUSTMENT
ZONE = FLORIDA EAST
LINEAR UNIT = US SURVEY FEET
COORDINATE SYSTEM 1983 STATE PLANE
TRANSVERSE MERCATOR PROJECTION
ALL DISTANCES ARE GROUND
SCALE FACTOR = 1.0000265
GROUND DISTANCE X SCALE FACTOR = GRID DISTANCE
BEARINGS AS SHOWN HEREON ARE GRID DATUM,
NAD 83 1990 ADJUSTMENT, FLORIDA EAST ZONE.



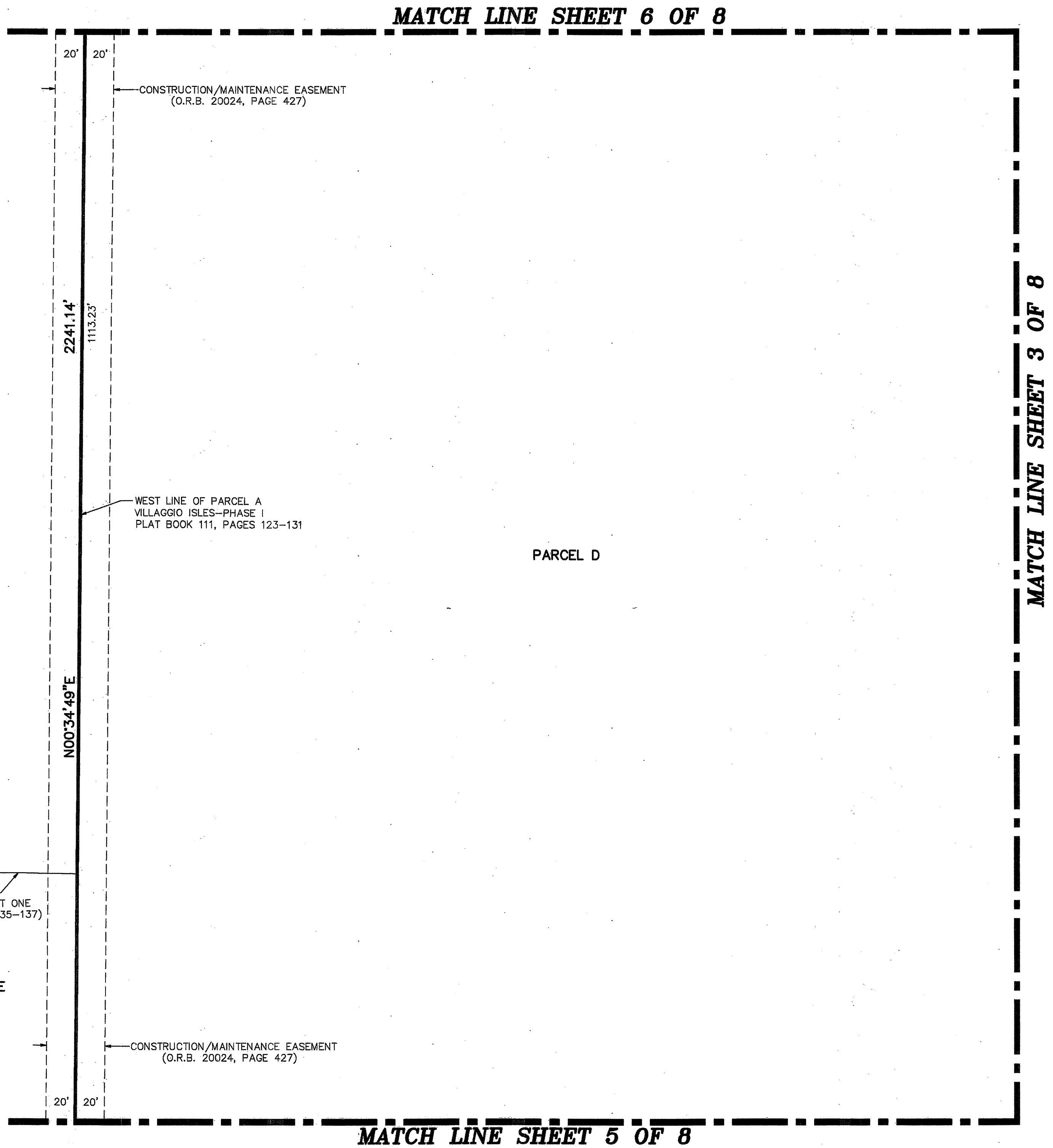
105

STATE OF FLORIDA
COUNTY OF PALM BEACH
THIS PLAT WAS FILED FOR
RECORD AT _____ M.
THIS _____ DAY OF _____
A.D. 20____ AND DULY RECORDED
IN PLAT BOOK _____ ON
PAGES _____ AND _____

SHARON R. BOCK
CLERK AND COMPTROLLER

BY: _____
DEPUTY CLERK

SHEET 4 OF 8



UNPLATTED

PARCEL D

ATLANTIC COMMONS-PLAT ONE
(PLAT BOOK 115, PAGES 135-137)

NORTH LINE OF
ATLANTIC COMMONS-PLAT ONE
(PLAT BOOK 115, PAGES 135-137)

WEST LINE OF PARCEL A
VILLAGGIO ISLES-PHASE I
PLAT BOOK 111, PAGES 123-131

CONSTRUCTION/MAINTENANCE EASEMENT
(O.R.B. 20024, PAGE 427)

CONSTRUCTION/MAINTENANCE EASEMENT
(O.R.B. 20024, PAGE 427)